





# F2.8-4.0 / 25-400mm

Great Lenses Make Great Cameras

Matches virtually all shooting situations

## F2.8-4.0 LEICA DC Lens with 25-400mm

### F2.8-4.0 LEICA DC VARIO-ELMARIT Lens

The new 25-400mm\* LEICA DC VARIO-ELMARIT lens was created especially for the DMC-FZ1000. It has an F2.8-4.0 brightness that resists blurring even for telephoto shots. Passing Leica's stringent standards, this lens achieves high descriptiveness in detail and resolution to corners.

### Flexible Angle of View from 25mm to 400mm

Superb optical performance from 25mm wide-angle to 16x optical zoom\* gives you high versatility and mobility. It lets you capture a large variety of shooting situations, from scenery to portraits or telephoto shots of tiny birds on tree branches and animals crossing the distant horizon.

\* 35mm camera equivalent: 25-400mm.  
• Leica is a registered trademark of Leica Microsystems IR GmbH. Leica DC lenses are manufactured using measurement instruments and quality assurance systems that have been certified by Leica Camera AG based on the company's quality standards.

### Smooth, Beautiful Defocusing Effect

The new lens features 5 aspherical glass lenses, which are made possible by Panasonic's unique aspherical lens mold technology. Combined with the large MOS sensor, it gives your photos a shallow depth of field with an impressive defocusing effect featuring invisible edge lines.



With an edge line

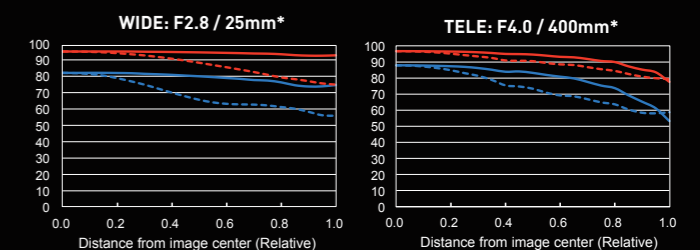


Without edge line (FZ1000)



### High MTF Value

Comprising 15 elements in 11 groups, including 4 ED lenses and 5 aspherical lenses with 8 aspherical surfaces, this advanced lens unit achieves a high MTF value. The first lens group located at the front consists of 4 lenses to minimize chromatic aberration especially at the tele-end.



\* 35mm camera equivalent.  
Meridional Direction: Sagittal Direction  
55 lp/mm: 55 lp/mm (solid), 35mm camera equivalent: 20 lp/mm (dashed)  
27 lp/mm: 27 lp/mm (solid), 35mm camera equivalent: 10 lp/mm (dashed)





Photo by Adam Barker

35mm camera equivalent: 25mm, 60 sec, F3.7, ISO250

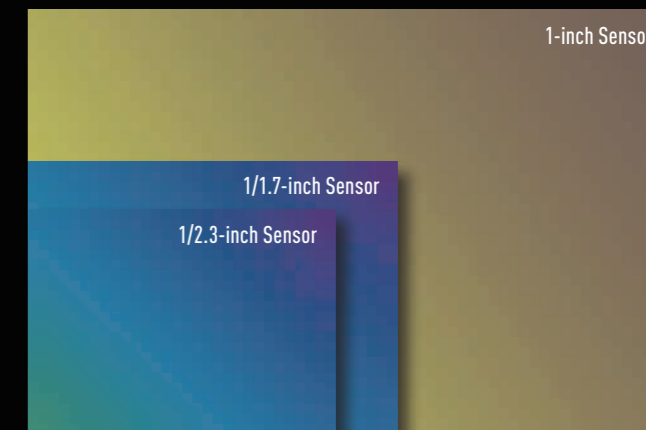
# 1-inch MOS Sensor

Ultimate Picture Quality with a Flagship Bridge Camera

## The largest sensor on LUMIX compact cameras\* 20.1-megapixel 1-inch MOS Sensor

The newly incorporated 1-inch 20.1-megapixel High Sensitivity MOS Sensor improves the S/N ratio, making it possible to capture clear images with minimum noise even when shooting at ISO12800 / Extended ISO25600. A rich amount of light helps to produce impressive defocusing with shallow depth of field.

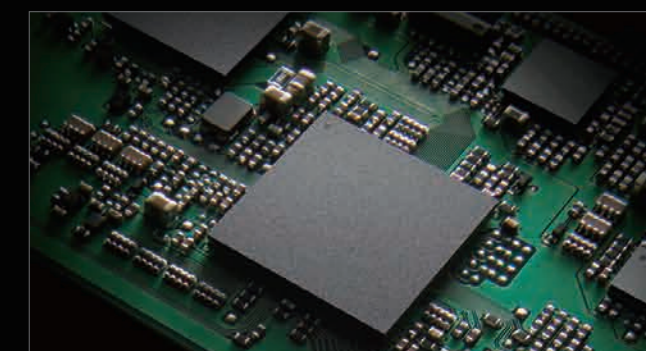
\* As of June 12, 2014.



## Dramatically improved picture quality Newly Developed Venus Engine

The new Venus Engine features Multi-process NR, Three Dimensional Color Control and Aperture Filter to achieve high color reproduction and high resolution images with natural description.

The combination of the High Sensitivity MOS Sensor and the Venus Engine achieves stunning picture quality well beyond the limit of digital compact cameras.



## Advanced NR (Noise Reduction) System

The new Multi-process NR applies effective noise reduction according to each frequency component to make the image clearer even in high-sensitivity shooting.

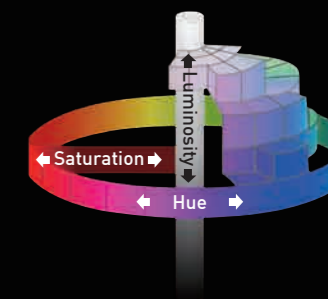
In addition, the new Random Filter granulates chromatic noise in order to blend it into the image more naturally.

## Natural Edge Processing

The newly adopted Aperture Filter is capable of controlling a wider frequency range. It adjusts the amount of sharpness according to the frequency level, resulting in a faithful stereoscopic effect.

## Freer Color Adjustment

Color reproduction is improved by accurately evaluating each color and luminance level. This provides greater freedom in color adjustment, to produce flesh tones and skies that appear just as they do in nature.



# 4K Video

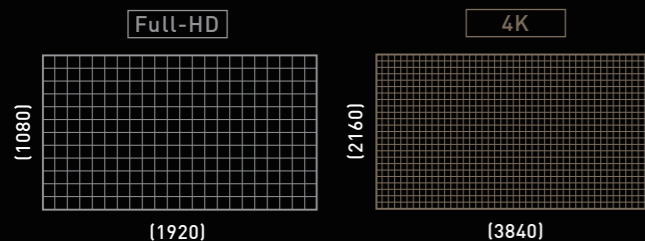
## Advanced Video Recording Performance



Opening the door to the age of 4K

### The World's First 4K Video Recording\*

The DMC-FZ1000 is also an advanced photographic tool for recording videos\*\*. In addition to full-HD 60p (NTSC area) / 50p (PAL area) videos, the DMC-FZ1000 can record 4K video in MP4 (3840 x 2160, 30p (NTSC area) / 25p (PAL area)).



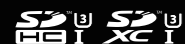
### 4K Photo — Capturing Magical Moments

It ushers in a new form of photo creativity by letting you cut out 3840 x 2160 8-megapixel equivalent images from 4K video footage to capture spur-of-the-moment shots that are often missed with ordinary still photos.

### High-Performance Data Processing

To process large volumes of high-resolution 4K video data, both speed and performance are required for the imaging engine. The DMC-FZ1000 complies with UHS Speed Class 3 (U3) which is a new speed class standard for the SD Memory Card. It guarantees a constant minimum write speed of 30MB/s to respond to the market demand for 4K video.

64GB: RP-SDUC64 GAK  
32GB: RP-SDUC32 GAK  
16GB: RP-SDUC16 GAK



\* For a compact camera as of June 12, 2014.  
 \*\* Motion picture with [AVCHD] or [MP4] in [4K] can be recorded up to 29 minutes 59 seconds. Motion picture with [MP4] in [FHD] [HD] [VGA] can be recorded up to 29 minutes 59 seconds or up to 4 GB.  
 \*\*\* The recording format is 30p (NTSC area) / 25p (PAL area).  
 • Use a card with SD Speed Class with "Class 4" or higher when recording motion pictures.  
 • Use a card with SD Speed Class with "UHS Speed Class 3 (U3)" when recording motion pictures in [4K].  
 • The UHS Speed Class3 (U3) mode write speed is only possible when using with the U3 compliant host devices.  
 • MB/s = 1,000,000 byte/s  
 • SDHC, SDXC Logos are trademarks of SD-3C,LLC.

An actual image extracted from 4K video.

### Dramatic, beautiful slow-motion videos High-Speed Video in Full-HD

You can record high-speed videos at 120 fps (NTSC area) / 100 fps (PAL area) in full-HD quality\*\*\*. You can capture scenes that can't be seen with the naked eye, and play them back in dramatic slow motion.



### 5-Step Smooth Zooming

You can control the zoom operation to match the shooting situation in 5 speeds from low to fast, for smoother zooming.

### HYBRID O.I.S. (Optical Image Stabilizer) +

This detects and compensates for the camera's 5 types of movement to suppress blurring. • Except for 4K video or high-speed video recording.

### Cineline Gamma

"CINELIKE D" and "CINELIKE V" are newly available for expressive cinema-like tones. • When Creative Video mode is selected.

### Stereo Shotgun Microphone (DMW-MS2)

In addition to the internal stereo zoom microphone, the external DMW-MS2\* lets you adjust the sound gathering characteristics to better match the shooting situation.



DMW-MS2  
\* Sold separately.

# Agile Mobility and Intuitive Control

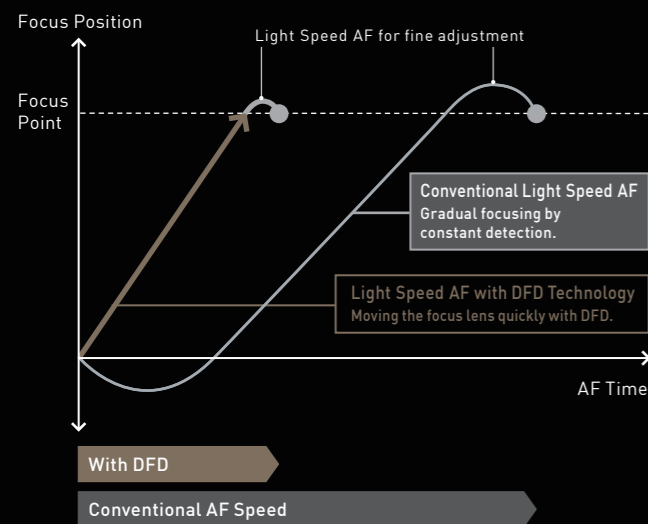
## Ultra-high speed and precision

### Light Speed AF with DFD Technology

A dedicated linear motor in the focus system and newly combined DFD (Depth From Defocus) technology\* achieve ultra-high-speed AF of approx. 0.09 sec\*\* (wide-end) / approx. 0.17 sec\*\*\* (tele-end).

DFD technology instantaneously calculates the distance to the subject by evaluating 2 images with different sharpness levels.

\* Works for photo shooting only. \*\* CIPA standard. When using Live View Finder.  
\*\*\* Panasonic in-house examination (Infinity to 2m shooting time lag).



## Pursuing mobility and pleasure of use

### Uncompromising Design Work

The DMC-FZ1000 operation is smooth and easy. Professional photographers and camera experts collaborated on the grip, operability, and design details.



Grip



Drive Mode Dial



Focus Mode Lever



Manual Ring

## Quick start-up

### High Speed Response

The DMC-FZ1000 boasts the quick start-up time of approx. 0.66 sec to catch even the most fleeting shooting opportunities.

### 12 fps Burst Shooting in Full Resolution

The DMC-FZ1000 achieves high-speed burst shooting at 12 fps in 20.1-megapixel resolution with a mechanical shutter.

### 1/4000 sec Shutter Speed

A high shutter speed of max. 1/4000 sec (wide-end) / 1/3200 sec (tele-end) / 1/16000 sec (electronic shutter) enables you to capture spur-of-the-moment, fast-moving subjects.

## High-speed, high-resolution display

### 2,359k-dot OLED LVF (Live View Finder)

The LVF assures stable framing and superb visibility even at high magnification and under strong sunlight. The OLED for the DMC-FZ1000's LVF achieves high-speed response with minimum time lag while enhancing the resolution, as well as high, 10,000:1 contrast for superior color reproduction. A free-angle 921k-dot LCD also enables artistic framing.



## Unwire your creativity

### Wi-Fi® with NFC / QR Code Connection

With Wi-Fi® connectivity using the "Panasonic Image App", a smartphone / tablet can be used as a remote controller.



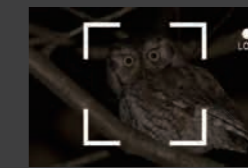
• The Wi-Fi CERTIFIED Logo is a certification mark of the Wi-Fi Alliance.  
• The N Mark is a trademark or registered trademark of NFC Forum, Inc. in the United States and in other countries.

## Focus Peaking



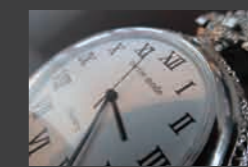
For more practical control over manual focusing, Focus Peaking is available even while remote-controlling the camera via Wi-Fi®.

## Low Light AF



The Low Light AF makes it possible to set focus on the subject more precisely in such as moonlight even without AF assist lamp.

## 3cm Macro



You can take dynamic close-up shots of flowers and insects, or render handicrafts in spectacular detail.

## Level Gauge



The Level Gauge lets the camera detect the horizontal / vertical angle of view, which is convenient for leveling the composition.

## Highlight Shadow Control



It is possible to adjust highlight / shadow separately. 3 patterns of settings can be customized in addition to 3 preset patterns.

## RAW Data Development in the Camera



You can convert a picture taken in the RAW format into the JPEG format right on the camera.

## Included Software



PHOTOfunSTUDIO 9.5 PE efficiently sorts and organizes your pictures. SILKYPIX Developer Studio 4.1 SE allows dramatically higher quality image development from RAW to JPEG.