

ALC

SIGHT HD

Video Doorbell Full HD 1080p

with On-Camera Recording and Cloud Storage



Camera Specs

- Full HD 1080p
- Human detection software
- Motion detection software
- Wide angle 145 degree lens
- Night vision
- 2-Way Audio
- Weatherproof IP55 outdoor rated
- Powered by existing doorbell wires
- Digital chime adapter included inbox
- Aluminum frame bracket

Recording Specs

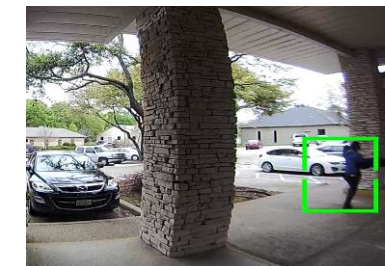
- Record in Full HD 1080p
- On-Board recording with microSD Card (16GB included)
- Maximum microSD Card 128GB
- Auto upload recorded events to your personal Google Drive or Dropbox account

Remote Access Specs

- Auto Ring when doorbell is activated
- Remote Monitoring Anytime from Anywhere 24/7/365
- Push Notifications when Motion is detected



Remote Viewing/2-Way Audio



Human detection software



Weatherproof



Model AWF71D

ALC Video Doorbell

Model: AWF71D

Full HD 1080p video gives you beautiful, clear images.



When someone pushes the doorbell button, your smartphone will ring just like a regular phone call. But it's your Doorbell calling.



View Live or recorded video on your phone from anywhere, anytime for peace of mind.

ALC Video Doorbell

Model: AWF71D

With 16GB on-board recording, there are no monthly fees to view your video.



Cloud Storage

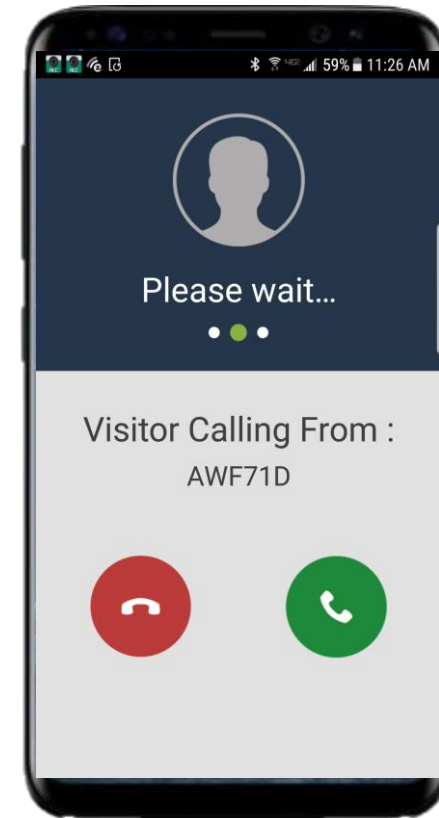


Recorded video can be setup to automatically upload to your personal Google Drive or Dropbox account, no charge.

ALC Video Doorbell

How does it work?

- Our Doorbell connects directly to your existing wires from your original doorbell button
- The original chime in your house will still “ding-dong” when the new Video Doorbell button is pushed
- At the same time, your smartphone will ring just like a regular phone call
- You can answer your door from anywhere in the world at any time
- See, Hear and Talk to who ever is there
- BTW, there are no monthly fees with our Doorbell



ALC Video Doorbell

How does it work?



Excellent Night Vision



Human Motion Detection

ALC Video Doorbell

What's in the Box

- 1080p Wi-Fi Video Doorbell
- Aluminum Frame Bracket
- (2) 15° Mounting Wedges
- 16GB microSD card (installed)
- Digital Door Chime Adapter
- Extension Wire
- Screw Kit
- ALC Warning Sticker
- QSG

